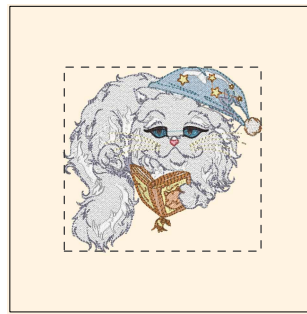


- 1. Bright White (Sul-R:1001)
- 2. Pastel Coral (Sul-R:1016)
- 3. Blackberry (Sul-R:1215)
- 4. Gun Metal Gray (Sul-R:1306)
- 5. Cornflower Blue (Sul-R:1249)
- 6. Med. Weathered Blue (Sul-R:1172)
- 7. Blackberry (Sul-R:1215)
- 8. Nickel Gray (Sul-R:1328)
- 9. Sea Foam Green (Sul-R:1207)
- 10. Pale Yellow (Sul-R:1061)
- 11. Dark Peach (Sul-R:1020)

Cat Life 001-5x7.dst

5.06x4.70 inches; 30,605 stitches
11 thread changes; 10 colors



- 1. Ice Blue (Sul-R:1289)
- 2. Bright White (Sul-R:1001)
- 3. Primrose (Sul-R:1066)
- 4. Dk. Ecrú (Sul-R:1128)
- 5. Dusty Peach (Sul-R:619)
- 6. Pastel Coral (Sul-R:1016)
- 7. Blackberry (Sul-R:1215)
- 8. Gun Metal Gray (Sul-R:1306)
- 9. Cornflower Blue (Sul-R:1249)
- 10. Nickel Gray (Sul-R:1328)
- 11. Med. Weathered Blue (Sul-R:1172)
- 12. Tan (Sul-R:1126)
- 13. Blackberry (Sul-R:1215)
- 14. Med. Jade (Sul-R:1205)
- 15. Putty (Sul-R:1508)
- 16. Pale Yellow (Sul-R:1061)
- 17. Dark Peach (Sul-R:1020)

Cat Life 002-5x7.dst

5.07x4.75 inches; 37,739 stitches
17 thread changes; 16 colors



- 1. Med. Weathered Blue (Sul-R:1172)
- 2. Blackberry (Sul-R:1215)
- 3. Bright White (Sul-R:1001)
- 4. Pastel Coral (Sul-R:1016)
- 5. Gun Metal Gray (Sul-R:1306)
- 6. Cornflower Blue (Sul-R:1249)
- 7. Blackberry (Sul-R:1215)
- 8. Sea Foam Green (Sul-R:1207)
- 9. Pale Yellow (Sul-R:1061)
- 10. Dark Peach (Sul-R:1020)

Cat Life 003-5x7.dst

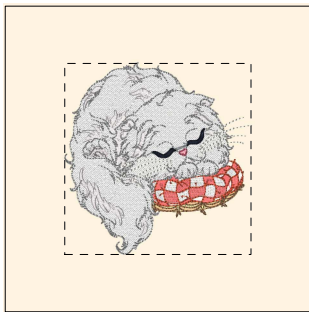
4.64x4.81 inches; 27,364 stitches
10 thread changes; 9 colors



- 1. Bright White (Sul-R:1001)
- 2. Dark Peach (Sul-R:1020)
- 3. Pastel Coral (Sul-R:1016)
- 4. Blackberry (Sul-R:1215)
- 5. Bright White (Sul-R:1001)
- 6. Gun Metal Gray (Sul-R:1306)
- 7. Cornflower Blue (Sul-R:1249)
- 8. Med. Weathered Blue (Sul-R:1172)
- 9. Lt. Khaki (Sul-R:1211)
- 10. Primrose (Sul-R:1066)
- 11. Dark Peach (Sul-R:1020)
- 12. Nickel Gray (Sul-R:1328)
- 13. Tan (Sul-R:1126)
- 14. Blackberry (Sul-R:1215)
- 15. Pale Yellow (Sul-R:1061)

Cat Life 004-5x7.dst

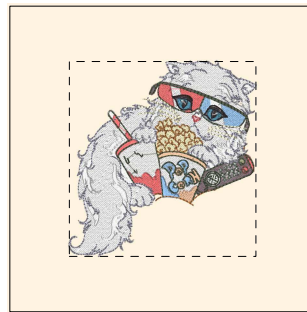
4.65x6.09 inches; 46,155 stitches
15 thread changes; 12 colors



- 1. Bright White (Sul-R:1001)
- 2. Lt. Silver (Sul-R:1236)
- 3. Dark Peach (Sul-R:1020)
- 4. Bright White (Sul-R:1001)
- 5. Pastel Coral (Sul-R:1016)
- 6. Blue Black (Sul-R:1182)
- 7. Lt. Silver (Sul-R:1236)
- 8. Primrose (Sul-R:1066)
- 9. (Sul-R:622)
- 10. Dark Peach (Sul-R:1020)
- 11. Blue Black (Sul-R:1182)
- 12. Maple (Sul-R:1021)
- 13. Gray Khaki (Sul-R:1321)
- 14. Brick (Sul-R:1081)
- 15. Whisper Gray (Sul-R:1325)
- 16. Toast (Sul-R:1266)

Cat Life 005-5x7.dst

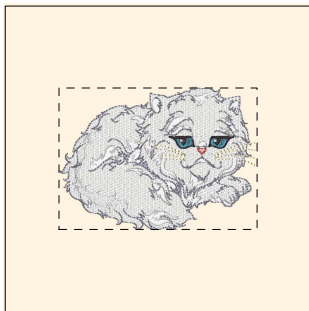
4.80x4.93 inches; 33,837 stitches
16 thread changes; 12 colors



- 1. Baby Blue (Sul-R:1028)
- 2. Bright White (Sul-R:1001)
- 3. Dk. Taupe (Sul-R:1179)
- 4. Pale Yellow (Sul-R:1061)
- 5. Dusty Peach (Sul-R:619)
- 6. Dark Peach (Sul-R:1020)
- 7. Pastel Coral (Sul-R:1016)
- 8. Baby Blue (Sul-R:1028)
- 9. Blackberry (Sul-R:1215)
- 10. Bright White (Sul-R:1001)
- 11. Gun Metal Gray (Sul-R:1306)
- 12. Baby Blue (Sul-R:1028)
- 13. Med. Weathered Blue (Sul-R:1172)
- 14. Lt. Khaki (Sul-R:1211)
- 15. Dusty Peach (Sul-R:619)
- 16. Dark Peach (Sul-R:1020)
- 17. Tan (Sul-R:1126)
- 18. Blackberry (Sul-R:1215)
- 19. Nickel Gray (Sul-R:1328)
- 20. Hedge Green (Sul-R:1272)
- 21. Pale Yellow (Sul-R:1061)
- 22. Dark Peach (Sul-R:1020)

Cat Life 006-5x7.dst

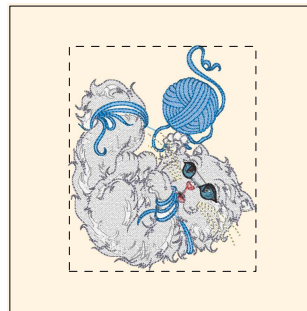
4.81x5.02 inches; 32,972 stitches
22 thread changes; 14 colors



- 1. Bright White (Sul-R:1001)
- 2. Pastel Coral (Sul-R:1016)
- 3. Baby Blue (Sul-R:1028)
- 4. Blackberry (Sul-R:1215)
- 5. Bright White (Sul-R:1001)
- 6. Gun Metal Gray (Sul-R:1306)
- 7. Med. Weathered Blue (Sul-R:1172)
- 8. Blackberry (Sul-R:1215)
- 9. Nickel Gray (Sul-R:1328)
- 10. Pale Yellow (Sul-R:1061)
- 11. Dark Peach (Sul-R:1020)

Cat Life 007-5x7.dst

5.10x3.65 inches; 27,039 stitches
11 thread changes; 9 colors



- 1. Bright White (Sul-R:1001)
- 2. Baby Blue (Sul-R:1028)
- 3. Pastel Coral (Sul-R:1016)
- 4. Blackberry (Sul-R:1215)
- 5. Bright White (Sul-R:1001)
- 6. Gun Metal Gray (Sul-R:1306)
- 7. Baby Blue (Sul-R:1028)
- 8. Med. Weathered Blue (Sul-R:1172)
- 9. Blackberry (Sul-R:1215)
- 10. Sapphire (Sul-R:1534)
- 11. Nickel Gray (Sul-R:1328)
- 12. Pale Yellow (Sul-R:1061)
- 13. Dark Peach (Sul-R:1020)

Cat Life 008-5x7.dst

4.80x5.80 inches; 40,198 stitches
13 thread changes; 10 colors



1. Bright White (Sul-R:1001)
2. Winter Sky (Sul-R:1291)
3. Lt. Khaki (Sul-R:1211)
4. Primrose (Sul-R:1066)
5. Dark Peach (Sul-R:1020)
6. Pastel Coral (Sul-R:1016)
7. Baby Blue (Sul-R:1028)
8. Blackberry (Sul-R:1215)
9. Bright White (Sul-R:1001)
10. Gun Metal Gray (Sul-R:1306)
11. Nickel Gray (Sul-R:1328)
12. Med. Weathered Blue (Sul-R:1172)
13. Primrose (Sul-R:1066)
14. Dk. Ecrú (Sul-R:1128)
15. Dusty Peach (Sul-R:619)
16. Tan (Sul-R:1126)
17. Blackberry (Sul-R:1215)
18. Sea Foam Green (Sul-R:1207)
19. Pale Yellow (Sul-R:1061)
20. Dark Peach (Sul-R:1020)

Cat Life 009-5x7.dst

4.53x5.05 inches; 34,552 stitches
 20 thread changes; 16 colors



1. Bright White (Sul-R:1001)
2. Chartreuse (Sul-R:1322)
3. Gray Khaki (Sul-R:1321)
4. Dk. Whisper Gray (Sul-R:1327)
5. Bright White (Sul-R:1001)
6. Peach (Sul-R:1019)
7. Dusty Peach (Sul-R:619)
8. Chartreuse (Sul-R:1322)
9. Gray Khaki (Sul-R:1321)
10. Dk. Whisper Gray (Sul-R:1327)
11. Pastel Coral (Sul-R:1016)
12. Gold (Sul-R:1070)
13. Med. Powder Blue (Sul-R:1201)
14. Med. Weathered Blue (Sul-R:1172)
15. (Sul-R:1281)
16. Lt. Silver (Sul-R:1236)
17. Blue Black (Sul-R:1182)
18. Whisper Gray (Sul-R:1325)
19. Charcoal Gray (Sul-R:1220)
20. Maple (Sul-R:1021)
21. Gray Khaki (Sul-R:1321)

Cat Life 010-5x7.dst

4.65x5.90 inches; 37,277 stitches
 21 thread changes; 16 colors



1. Bright White (Sul-R:1001)
2. Peach (Sul-R:1019)
3. Lt. Silver (Sul-R:1236)
4. Bright White (Sul-R:1001)
5. Peach (Sul-R:1019)
6. Pastel Coral (Sul-R:1016)
7. Med. Powder Blue (Sul-R:1201)
8. Med. Weathered Blue (Sul-R:1172)
9. (Sul-R:1281)
10. Blue Black (Sul-R:1182)
11. Lt. Silver (Sul-R:1236)
12. Blue Black (Sul-R:1182)
13. Maple (Sul-R:1021)
14. Gray Khaki (Sul-R:1321)
15. Brick (Sul-R:1081)
16. Whisper Gray (Sul-R:1325)

Cat Life 011-5x7.dst

4.22x4.52 inches; 30,203 stitches
 16 thread changes; 12 colors



1. Bright White (Sul-R:1001)
2. Dark Peach (Sul-R:1020)
3. Pale Yellow-Green (Sul-R:1063)
4. Pale Powder Blue (Sul-R:1074)
5. Powder Blue Tint (Sul-R:1151)
6. Bright White (Sul-R:1001)
7. Chartreuse (Sul-R:1322)
8. Pastel Coral (Sul-R:1016)
9. Gold (Sul-R:1070)
10. Blue Black (Sul-R:1182)
11. Lt. Silver (Sul-R:1236)
12. Dark Peach (Sul-R:1020)
13. Pastel Yellow-Green (Sul-R:1104)
14. Med. Ecrú (Sul-R:1127)
15. Pale Yellow-Green (Sul-R:1063)
16. Pale Powder Blue (Sul-R:1074)
17. Powder Blue Tint (Sul-R:1151)
18. (Sul-R:622)
19. Bright White (Sul-R:1001)
20. Blue Black (Sul-R:1182)
21. Maple (Sul-R:1021)
22. Brick (Sul-R:1081)
23. Steel Gray (Sul-R:1011)
24. Whisper Gray (Sul-R:1325)
25. Nile Green (Sul-R:1274)
26. Winter Sky (Sul-R:1291)
27. Dk. Ecrú (Sul-R:1128)

Cat Life 012-5x7.dst

5.09x4.80 inches; 35,408 stitches
 27 thread changes; 20 colors