

# Silhouette Hearts



## Material List:

Heavy Weight Water Soluble Stabilizer

Batting

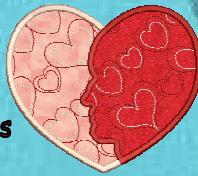
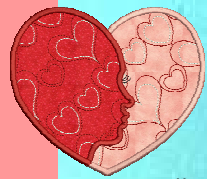
Fabric 2 Colors

5x7 Hoop capabilities

Curved or applique scissors

Resealable tape

All usual machine embroidery supplies



# ITH Mug Rug Directions

[www.SewSwell.com](http://www.SewSwell.com)

**Hoop water  
soluble stabilizer  
stitch first color. Turn hoop over  
lay wrong side  
of the bottom fabric  
on the stabilizer  
and tape in place.**



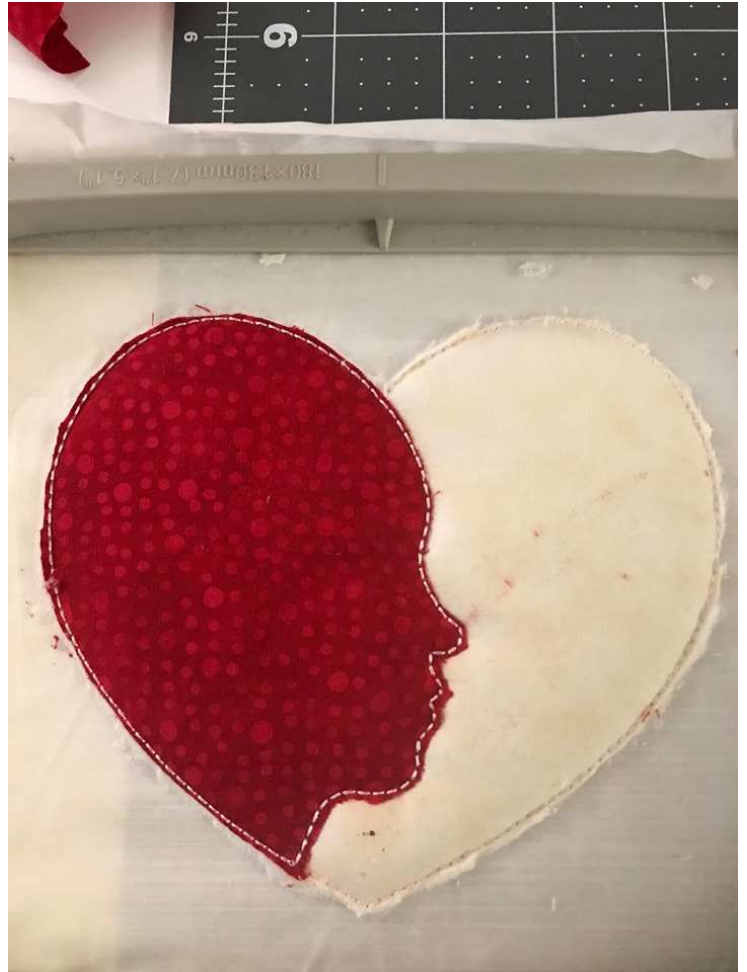
**Turn hoop back  
layer batting and  
fabric on top.  
Stitch next color to  
Tie down fabric layers.  
Cut away top excess fabric only!  
Leaving back  
and batting whole.**



**Stitch next  
placement line.  
Cut excess fabric  
carefully in the  
face area.**



**Remove hoop from machine  
cut away excess fabric  
and batting as close  
to the stitches as possible without  
cutting through stitches or stabilizer.  
Do the same for the back.  
Replace hoop**





**Stitch remaining colors  
Stop before last 2 color  
changes to match bobbin  
with the top thread  
for the satin stitch edge.  
Carefully pull away from WSS  
Finished and ready for the table.**

