

# ITH Face Mask



## Materials:

Tear away stabilizer

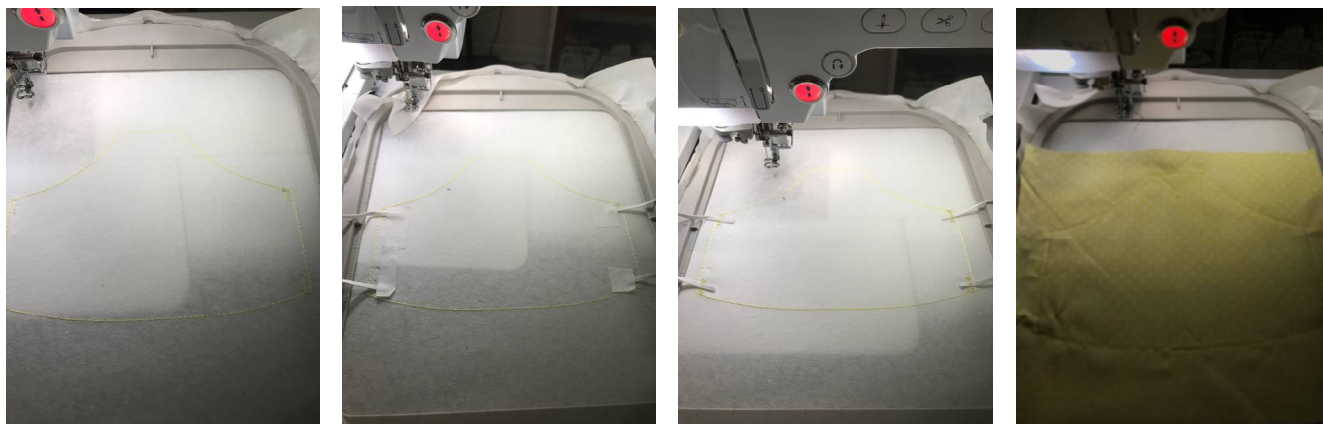
1/4" Elastic

2 Fabric Approximate 8" squares

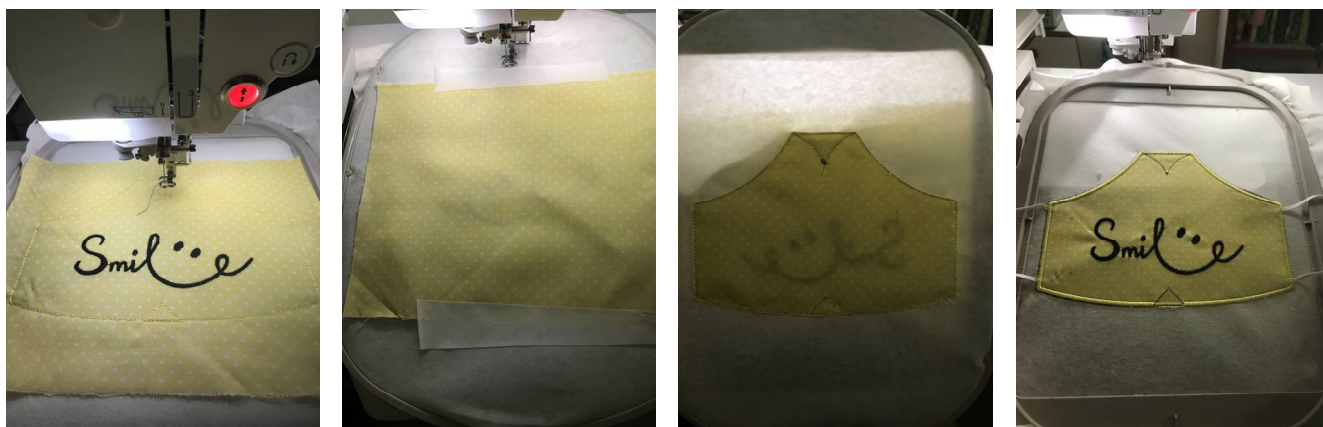
All normal embroidery supplies.

## How to create FACE MASKS A step-by-step

1. Start by cutting 2 lengths of elastic band at 6 1/2" for adult size, Child 5 1/2" for child. (You may want to make adjustments for individual. Everybody's different.
2. Attach the stabilizer, only, to the frame and embroider the first color in your embroidery file. Position the elastics at the marked points and embroider the next 4 steps (colors) which will hold the elastic in place.



- 3.. Remove the hoop from the machine and place your choice of fabric on top. Stitch down with color change.
4. Float extra stabilizer under the hoop to add stabilization for embroidery. Stitch out design.



5. Remove the hoop from the machine and Tear away extra stabilizer. Place your choice of fabric underneath the hoop, and tape in place. 4. Return the hoop to the embroidery machine and continue stitching. Then embroider a running stitch around the perimeter of the mask. Cut as close as possible to the running stitches, both on top and underneath the hoop. **DO NOT CUT ELASTIC!**
6. Match bobbin Thread to top. Return the hoop to the machine and finalize it with a satin stitch around the edges of the faced mask.



6. Match bobbin Thread to top. Return the hoop to the machine and finalize it with a satin stitch around the edges of the faced mask.

7. Remove the fabric from the hoop and detach the stabilizer from the mask. You are nearly there.

8. Lastly, fold in half right sides together. Stitch the top and bottom creases together following the stitch lines sewn during embroidery using sewing machine, (or simply stitch by hand).



