



Bat Greetings Directions



Description:

This design collection makes the perfect hanging decoration for your door, wall, or anywhere that makes you smile. Perfect quick gift for a friend or teacher. Made all In the Hoop (ITH). Looking for the witch hiding behind the sign seeing only her broom out the bottom and the Jack-o-lantern sneaking a peek from behind as well. The spider web dangling made with Free-standing Lace (FSL) and the spider climbing his way to the top. With 3 Sizes to choose from Small -5x7 hoop, Medium 8x8 hoop, and Large Uses the 6x10 hoop and the 8x8 hoop.

Supplies:

Wash a way stabilizer. Just large enough to be hoop for the chosen size.

Tear-a-way Stabilizer Enough for 2 hoopings of your chosen size.

Craft weight Cut-a-Way Stabilizer 2 Pieces approximal sizes for the large design 6x8 and 6x11

Scraps of Gray for the Bat, Brown for the Sign, and Orange for the pumpkins. Will need a back-ing fabric if you choose the size of each design.

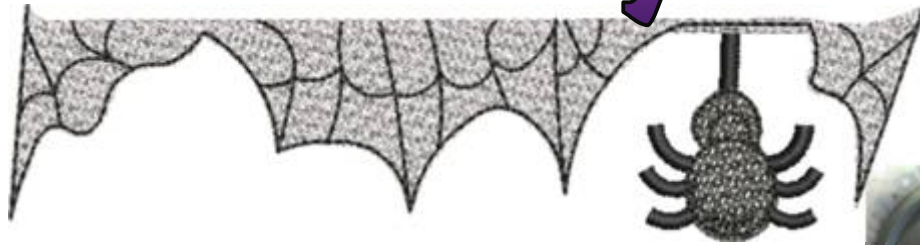
Broom options, non fraying fabric scrap, scrap cut on bias, or Raffia

Twine- around 50-56"

Thread with matching bobbins Black, White, Dark Gray, Orange, Brown. Other colors no extra bobbing needed.

All usual embroidery supply.

Free Standing Lace



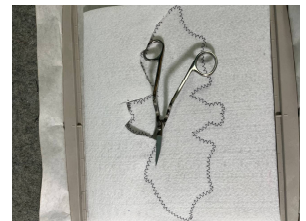
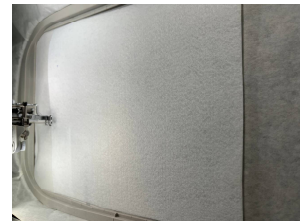
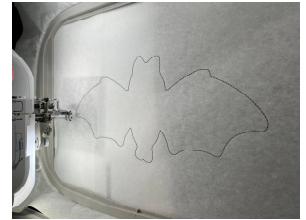
1. Hoop Water Soluble Stabilizer.
2. Change bobbin and thread to black. Stitch out black dangle.
3. Change bobbin and Thread to white. Stitch white components
4. Change bobbin and Thread to Dark Gray and Stitch out spider body
5. Change bobbin and Thread back to black to finish the spider and the web.
6. When all stitching is finished. Carefully pull away the lace from the stabilizer. You may want to cut close around without cutting the stitching to avoid pulling stitching out of place. If you have this problem no big deal you can choose to fray check the end, or do what I do and melt it by running a lighter or soldering iron quickly to melt the poly or rayon thread together. (Only happened once)
7. Place lace in hot water and swirl around until you melt away the unwanted stabilizer.
8. Lay out on a flat surface to dry pinning in place or putting a weight on it so it will dry flat.
9. Save for later. Will be added to the sign in the hoop.



Bat Hanger



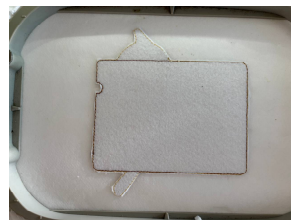
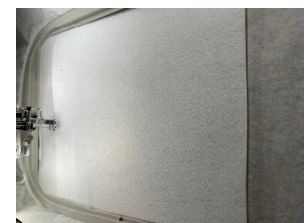
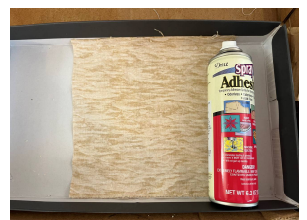
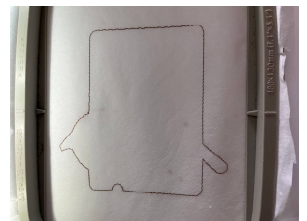
1. Hoop Tear-q-way stabilizer in chosen size.
2. Change the bobbin to the dark gray. The first color will be the top of the bat hanger portion.
3. The second color change is a placement line for the craft weight stabilizer. After it is stitched place craft weight stabilizer covering the entire bat outline. Stich the 3rd color to tack into place. First treat it like an applique and trim the heavy cut away as close to stitches as you can. It is okay if you clip some of these stitches. Get close. Be careful not to cut the Tear-a-way, just the stiff cut-a-way.
4. The fourth Color change is another placement line, just outline the bat again. Take your bat fabric and spray a temporary spray adhesive on the wrong side of both the front and back of the bat fabric. Take the hoop out of the machine and carefully lay fabric over the placement line on the wrong side of the hoop and repeat for the front. You will have a stabilizer sandwich. With the right side down on the bottom and up on the top of the hoop.
5. Stich the fourth color change will tack down both the front and back of the bat. Remove hoop and Carefully cut away excess fabric around the bat. Do not cut stitches.
6. Replace hoop and finish stitching out the design.



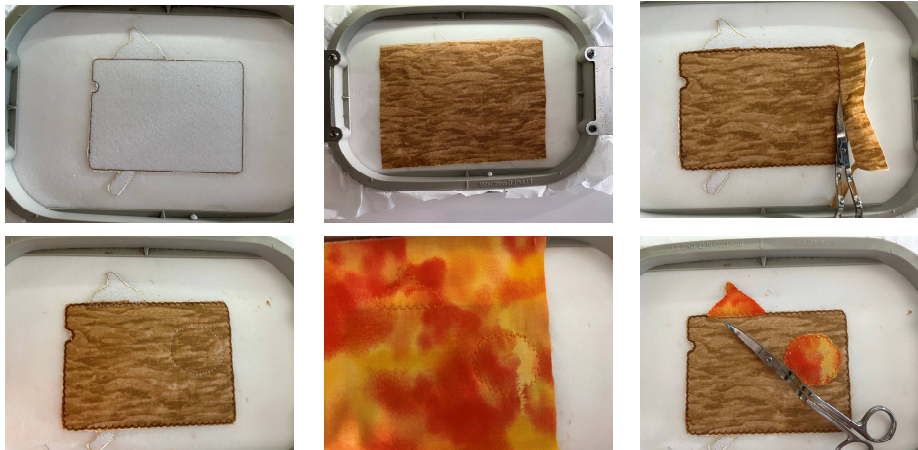
Sign with spiderweb and broom



1. Hoop Tear-q-way stabilizer in chosen size.
2. The First color is a placement line for the craft weight stabilizer and the back of the sign. After it is stitched, remove hoop from machine.
3. Spray temporary spray adhesive to the wrong side of the fabric used for the back. Place the wrong side of the sticky fabric to the bottom side of the hoop covering the placement outline. Replace hoop into machine.
4. Place the craft weight stabilizer covering the entire outline on top. Stitch the 2nd color change. This will tack down the backing and the craft weight stabilizer on top.
5. Remove hoop from machine. Trim the craft weight stabilizer. Cut away as close to stitches as you can. Turn the hoop over and Trim away excess fabric from the bottom of the hoop.

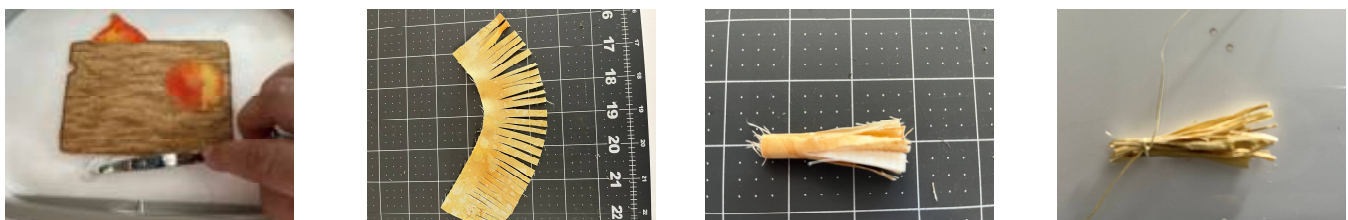


6. 3rd color change is a placement line for the sign background. (Brown).
7. 4th color change tacks the fabric down, now it is ready to trim the excess away. 5th and 6th colors are placement and tack down lines for both pumpkins.



7. Next few steps will be for the bottom of the broom. You have two options. A small strip of non fraying fabric, fabric cut on the bias, or Raffia.

For the fabric option, I cut a 2" wide piece of fabric around 4-5" long. I don't care if it frays but if I did I would cut it out of flannel or on the bias at a 45% angle to the salvage edge of the fabric. Cut small strips about 1/2" from the edge down the length of the strip. Roll, keeping the solid end tighter and the frayed end looser, so it will fan out better. For the Raffia option simply gather some together use extra piece to tie on one end to make a small broom end.



8. Now that the broom end is prepared it is time to stitch color change number 7. A simple placement line.
9. Take the hoop out of the machine and turn it over. You will attach the broom end to the bottom of the hoop. Tape the broom end in position making sure the next stitch will catch plenty of the broom end, as shown. Replace hoop into the machine, Stitch out the next color that will do a zig zag to tie down broom end. (Depending on the thickness of your broom end and your machine you may need to raise your foot level, per your manufactures instructions for a thicker area.
10. Remove the tape close to the embroidery sign but for the raffia keep taped in place to prevent future issues during embroidery



11. Continue sewing out until color change number 15, or the orange around the pumpkin. Change the bobbin to match the orange on the outside. When orange is finished you can change to the brown bobbin you are using for the sign.



12. Here we are at color change 17, the placement line for the FSL spiderweb made earlier. It should be dry by now and ready to go. Stitch it out and it will show you right where to place the lace.
13. After carefully placing the top edge of the spiderweb to the placement line tape in place using a resealable tape, such as painters tape.
14. Stitch out Color change 18, a zig zag stitch to hold the lace in place.
15. Color change 19 will do a satin stitch finishing off the perimeter.
16. Carefully remove the sign from the hoop remembering the broom bottom on the backside.



Assembly

1. Prepare the designs by carefully punching holes into the eyelets using an awl or similar tool. Be careful on the sign not to cut the stitches around the top of the H in Happy.
2. Cut twine around 56", this is a little extra you can trim in the excess at the end.
Threading the twine. I used a bodkin. There are several ways of accomplishing this process, a large yarn needle or use tweezers to pull the twine through the holes.
3. Starting at the top of the bat thread the twine front to back and pull through.
4. Next thread the right bat wing from back to front.
5. Continue on to the top right of the sign threading from front to back, next is the left side of the sign which you will thread from back to front.
6. Bring twine back up to the bat wing and thread front to back.
7. Finally back through the top of the bat head back to front.
8. You can now make adjustments positioning the bat and sign by sliding up and down the threaded twine. Once you have positioned where you like it, tie off the top of the twine. Add decorative buttons if desired! It is finished! Hang somewhere fun and a little spooky.

