

# ITH MYSTICAL MAGICAL PLACEMATS

## BONUS:



## SUPPLIES:

### Supplies needed for 4 placemats.

Batting 45"width 1 yard

Background fabric, batting, and binding (Dark Blue) 2 3/4 yards

Assorted 2 1/2" strips (Herringbone pattern) Minimum of 8 different colors. Lengths will depend on makers choices. I used a jelly roll and had about half left.

Curved Scissors or applique scissors

Fabric glue stick

Normal sewing and embroidery notions.

Thread to match and contrasting thread for quilting design

Embroidery Design Collection ITH Mystical Magical Placemats from SewSwell.com

## CUTTING DIRECTIONS:

\*WOF –Width of Fabric

Dark Blue:

Cut 6 - \*12"x WOF Background and backing

\*(Or width needed to fit your hoop width) My hoop width was 11"

Cut 8– 1"x 10" Top Sashing

Cut 8—1 5/8" x 10" Bottom Sashing

Cut 10– 2 1/2" x WOF for Binding

Cut

Batting:

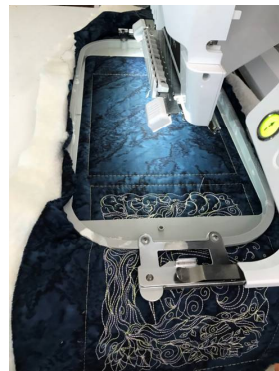
Cut 4—12"x WOF

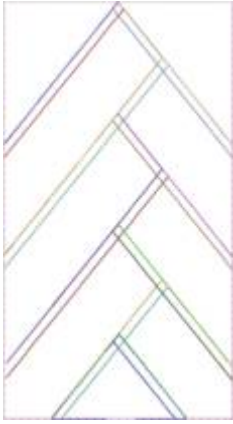
Cut 2 1/2 Strips minimum of 8 colors with a minimum of 2 each of the colors



# 1TH CENTER QUILTED BLOCK

1. Sandwich batting between two strips of front and backing of center block. First right side down then layer batting and top with front focal fabric.
2. Hoop Sandwiched fabric leaving long tail. We will be moving hoop down the strip to reduce fabric waste.
3. Stitch chosen quilting design with basting included.
4. Un-hoop slide down and rehoop for the next placemat center block. Stitch all center blocks in this manner.
5. Using the basting stitch as a guide, cut out your center blocks with a ruler and rotary cutter. Cut to size 7.5 x 10



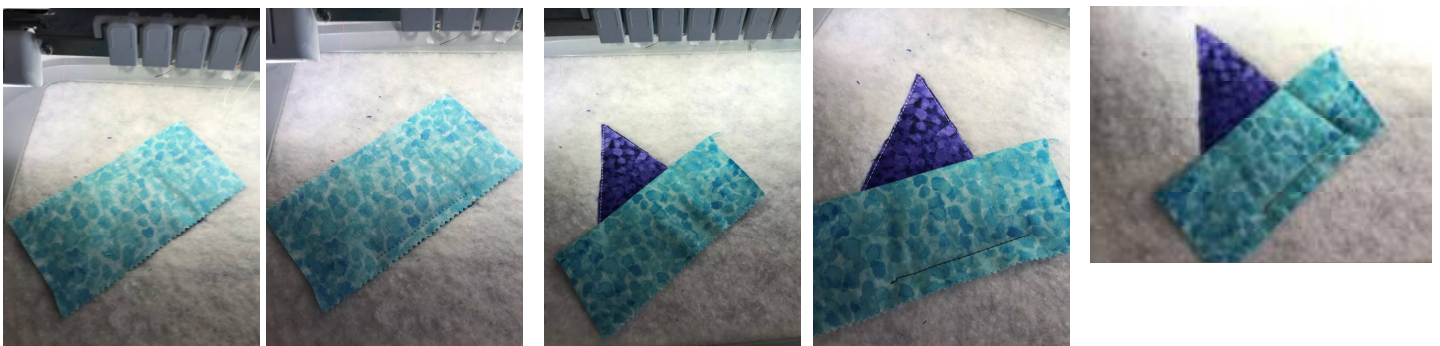


# PIECED HERRINGBONE QUILT DIRECTIONS

1. Layer backing fabric right side down with a layer of batting and hoop.
2. Stitch color number 1 is fabric placement line. It will stitch a triangle. Lay fabric over area covering entire triangle.
3. Stitch next color that ties down the fabric. Cut away excess fabric.



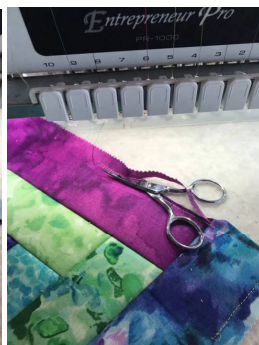
4. Next stitch out the placement line. Line the edge the strip with the stitched line, making sure right sides together.
5. The 4rd color change will stitch down this strip.
6. Flip the fabric open and finger press seam flat.
7. Color Change 5 will tie down the strip into place.





# PIECED HERRINGBONE CONTINUED.

8. Color 6 is the placement line for the opposite side. Stitch it out. You can now trim excess fabric from the previous tack down of fabric.
9. Flip fabric open at the seam and finger press open.
10. Color 6 will tack down that strip
11. Stitch color change seven will be the placement line for the next strip of fabric.



# PIECED HERRINGBONE COUNTINUED.

12. Continuing the same process until all strips are in place.
13. The last color change is a basting stitch. **IMPORTANT** Watch closely as the basting stitch goes around that the foot of the machine does not get caught in excess fabric.
14. Un-hoop slide down and rehoop for the next herringbone block. Stitch all herringbone blocks in this manner. You will need 2 for each placemat.
15. After completing all blocks, Using the basting stitch as a guide, cut out your center blocks with a ruler and rotary cutter. Cut to size 5.5 x 10



NOTE: It is okay if the top corners don't get caught in the basting as long as it is within the 1/4" seam allowance.



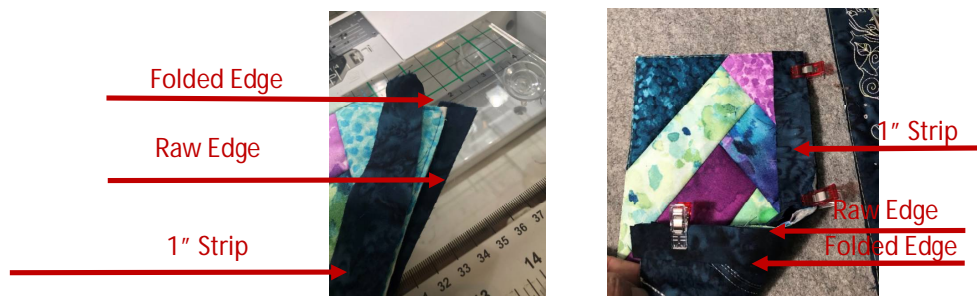
# PLACEMAT CONSTRUCTION

1. Starting with the sashing. Take the 1 5/8" strips, fold and press in half lengthwise. This will be the sashing on the bottom of the placemat at block joins.
2. First decide what direction you want your herringbone blocks to run. Take the folded sashing and line up raw edges to the right edge of the first herringbone block.

## \*Options



3. Take the folded sashing lay it down with the fold to the left and the raw edge to the right. Place the herringbone block on top right side facing up lining up the right edge of block. Sandwich that with the 1" sashing on top.



4. Stitch 1/4" seam allowance. Repeat for 4 of the herringbone blocks.
5. Repeat this process to the right edge of the center blocks.





6. Flip open the top 1" sashing and press open. Top only! Leave the folded sashing in place, we will use that later.
7. Arrange and layout the order of your choice with four herringbone blocks on the left, then the 4 center blocks, followed by the final four herringbone blocks.
8. From right to left flip the first herringbone block onto the right edge of the center block, lining edge to the raw edge of the 1" sashing attached to the center block. Stitch making sure to keep the 1/4" seam allowance. Repeat this step for all four placemats.
9. Now take the joined center and right block and flip onto the furthest left herringbone block with the raw edges of the sashing layered with the raw edge of the center block.



10. Open up and press with the batting pieces butting up together filling in the 1/2" left of the 1" sashing perfectly.
11. Now is time to use the folded sashing on the back of the placemats. Take a glue stick and put a small amount of glue on the fold of the back sashing then finger press it covering the seam.
12. You can choose to hand sew it into place or turn it over and stitch in the ditch sewing up the backside and finishing it up with a nice topstitch.
13. Now just use your favorite binding technique. I used 2 1/2" binding folded and sewn to the wrong side., flipped it and topstitched it down.

